

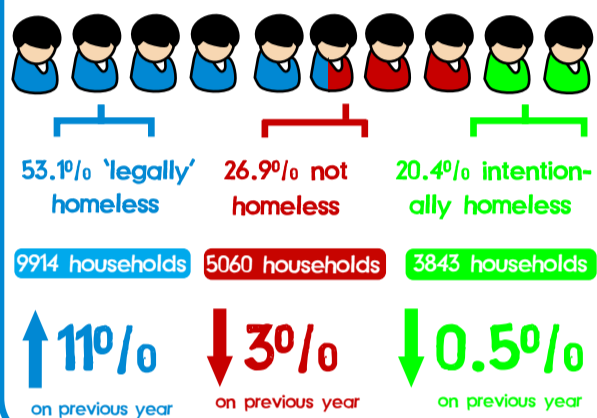
All analyses based on NIHE source data. Comparisons against previous years vary depending on the availability within the data set, and in some instances may not be possible. Some elements of the data were missing, and as such are not included. Data are mostly grouped by NIHE area (some data are at District Office level). Data refer to households and not individual cases. Thus, the numbers of actual homeless will be greater than recorded in the data. NIHE Household type definitions: 'Single' households are males and females presenting to the NIHE (alone) as homeless aged 16-17; 18-25; and 26-59. 'Couple' households are husband and wife aged 16-17; 18-25; and 26-59; and two adults aged 16-17 or 18-59. 'Small family' households are 2 adults or lone parent with either 1 or 2 children. 'Large families' include: 2 adults with 3 children; 2 adults with 4 or more children; 1 parent with 3 children; 1 parent with 4 or more children; 3 or more adults, with 2 or more children. 'Large adult' households constitute 3 or more adults, with no more than one child. Adults are aged 18 years and over. 'Pensioner' households include: single males and females aged 60 or more; Husband and wife aged 60 or more; 2 adults aged 60+; and 3 or more OAPs. Some data will not tally with yearly totals of presenters, because decisions can be made to presenters who originally presented the previous year. Anomalies / errors have not been corrected for, but are indicated in the summary where these are known to the author. Any queries regarding data should be forwarded to NIHE. Data received Winter 2010, analysed Feb 2011. Data for 2010-2011 expected Autumn / Winter 2011.

Background to NIHE statistics: How the NIHE assess homelessness

NIHE duty. Legislation sets out a number of duties that the NIHE owes towards homeless people. The level of duty owed will depend on the extent to which the applicant has passed four tests. The individual 'presents' to the Housing Executive as homeless. In doing so, the individual is making an application for assistance for themselves and those in their household they have a connection with. NIHE will carry out an assessment and make appropriate enquiries, based on these four tests: **1. homeless/threatened with homelessness. 2. eligibility for assistance. 3. in priority need. 4. unintentionally homeless.** For further information on the tests, read the full stats [click here](#). CHNI also have an online information leaflet, [click here](#). Alternatively, the Housing Rights Service provide up to date information about this process, [click here](#). **Full Duty Applicant (FDA)** If the applicant satisfies all four tests, then they will be awarded FDA. The applicant will then be owed a statutory duty by the NIHE to be rehoused; and will be entitled to access temporary accommodation while they are waiting to be rehoused. FDA status also ensures the provision of permanent accommodation, or temporary accommodation where permanent is not currently available. **Statistics:** as part of their monitoring and evaluation of homelessness across NI, the NIHE collect data for every household that 'presents' as homeless, as well as their subsequent assessment and decision made. A selection of these data are presented below.

Summary

18664 households presented to the NIHE as homeless in 2009-2010. Of these:



	08-09	09-10	%change
Awarded FDA status	8934	9914	11.0
Not Homeless	5224	5060	-3.1
Intentionally homeless	3862	3843	-0.5
total	18076	18817	3.3

%change = change from 2008-09 noted in 2009-10 Please note: based on these data, presentations total 18817 households, whereas all other data recorded homeless presentations at 18664. Insufficient data were available to rectify this discrepancy.

Presenters

18664 households presented to the NIHE as homeless between April 2009 and March 2010. This was an **3.3% increase** on 2008-09.

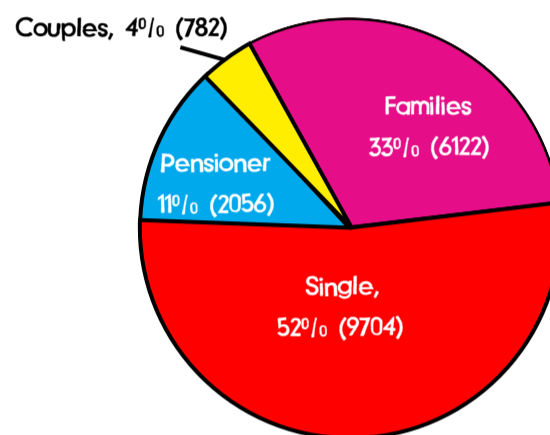
FDA

The NIHE assessed and decided that 53% were statutorily homeless (Full Duty Applicants). In terms of percentage change, this was an **11% increase** on 2008-09.

Intentionally & not homeless

27% were deemed to be 'not homeless' and approximately 20% were adjudged to be 'intentionally homeless'. In terms of % change on 2008-09, this was an increase of **3% and 0.5%** respectively.

Presenters by household



No. households presented=18664

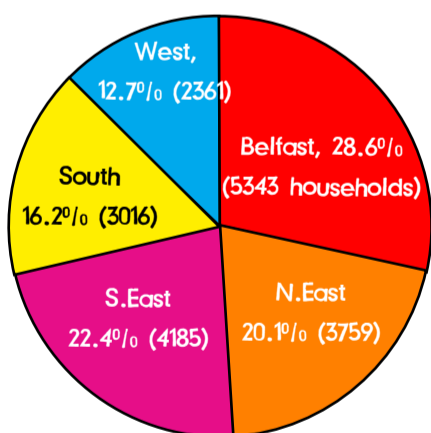
Single households

Male: 67.5% of 'singles' category
Female: 32.5%

Family households

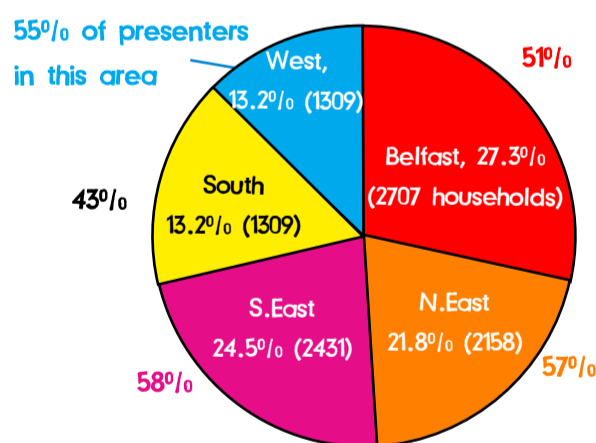
small families: 79% of 'families' category
large families: 18%; large adult: 3%

Presenters by area



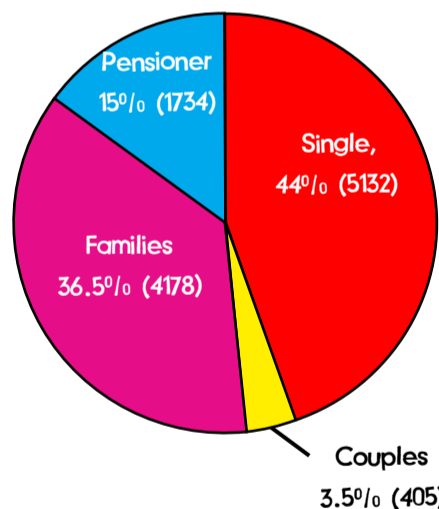
No. households presented=18664

FDA by area



No. households awarded FDA=9914

FDA by household

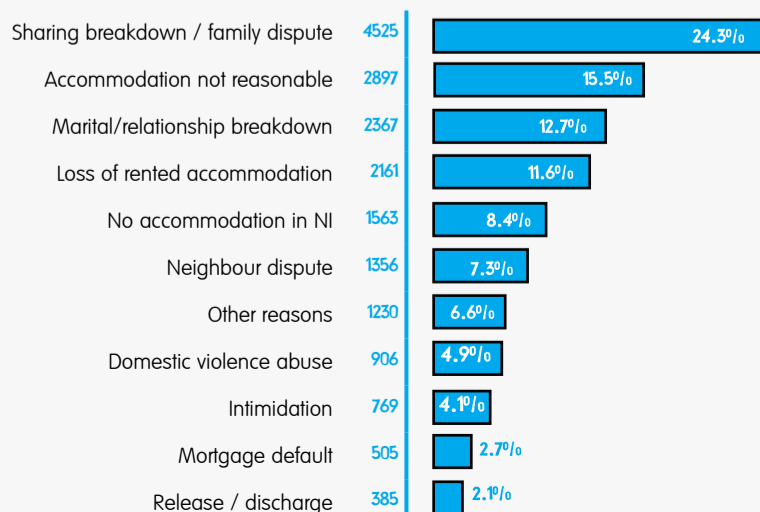


What % of each household were awarded FDA?

53% of 'singles' households
52% of 'couples'
68% of 'families' and
84% of 'elderly' households

*Please note - data anomaly: in final data set, the number awarded FDA was recorded as 9914. On examining household type data, the number awarded FDA totals 11449. It was not possible, based on the data supplied, to rectify this anomaly, and as such, this chart is based on that total.

Presenters by reason



FDA by reason

